



14 Allott Court Spring Gully VIC

4 2 3

This beautifully refurbished home exudes a cool country vibe by the big gum trees of Spring Gully.

Anyone looking for a character-filled property that's also right on trend will love the fresh stylings and contemporary additions to this double-storey brick veneer.

Boasting a bright, airy and flexible floorplan, it will no doubt catch the attention of young families and more. If you're a creative person, you'll love the charm, if you're a tradie or home handyperson, you'll absolutely love the shedding.

Set well back from the street behind a garden and a wide, wrap-around veranda, the front door opens onto a spacious lounge room with timber floorboards, dado boards and a

[For full version visit the website](https://www.bendigorealestate.com.au)

Type : House
Price : \$ 780,000
Land Size : 1054 sqm
View : <https://www.bendigorealestate.com.au/sale/vic/greater-bendigo-region/spring-gully/residential/house/8089604>

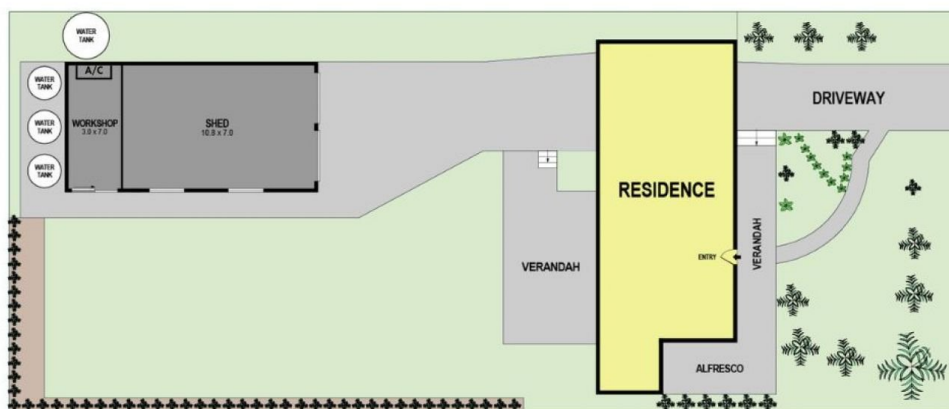


Matt Gretgrix
03 5441 4555

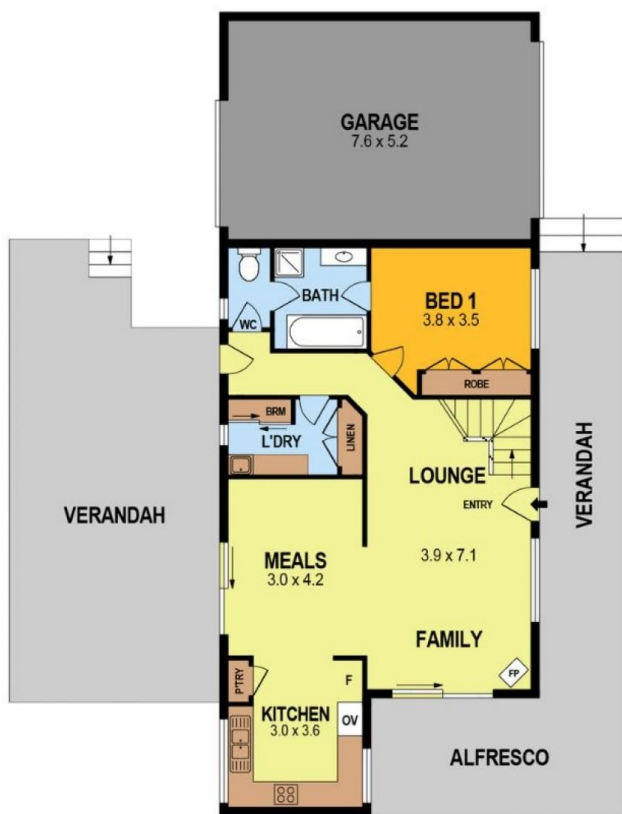


Nektı Tzouroutis
03 5441 4555

14 ALLOTT COURT, SPRING GULLY



SITE PLAN
(NOT TO SCALE)



GROUND FLOOR



FIRST FLOOR

INT	174m ²
SHED	76m ²
GARAGE	40m ²
ALFRESCO	17m ²
VERANDAH	35m ²
WORKSHOP	21m ²
TOTAL APPROX	342m ²

0 1 2 3 4 5 **SCALE (METRES)**

THE ABOVE PLAN IS AN ARTIST'S IMPRESSION ONLY, IT INCLUDES ELEMENTS THAT ARE FOR DISPLAY PURPOSES ONLY AND MAY NOT BE TO SCALE.
LANDSCAPING SHOWN IS INDICATIVE ONLY. DIMENSIONS ARE APPROXIMATE.

Ref. No: 240730