

**6 Brudian Drive Strathfieldsaye VIC**

4 2 2

Pack your swim suit for a summer to remember in Brudian Drive. Act fast to secure this gorgeous home in time for spending the warm months ahead by the salt water, solar heated inground pool.

The fun times continue on the sunny porcelain tiled patio, the timber deck with shady Balinese hut, and in the dedicated indoor/outdoor room.

This new listing is part of an exclusive boutique new homes estate on the Strathfieldsaye fringe. You'll be in good company here, among likewise contemporary builds.

The home has been designed with a large, growing family in mind. The floorplan offers private, flexible spaces, and

[For full version visit the website](https://www.bendigorealestate.com.au/sale/vic/greater-bendigo-region/strathfieldsaye/residential/house/8179299)

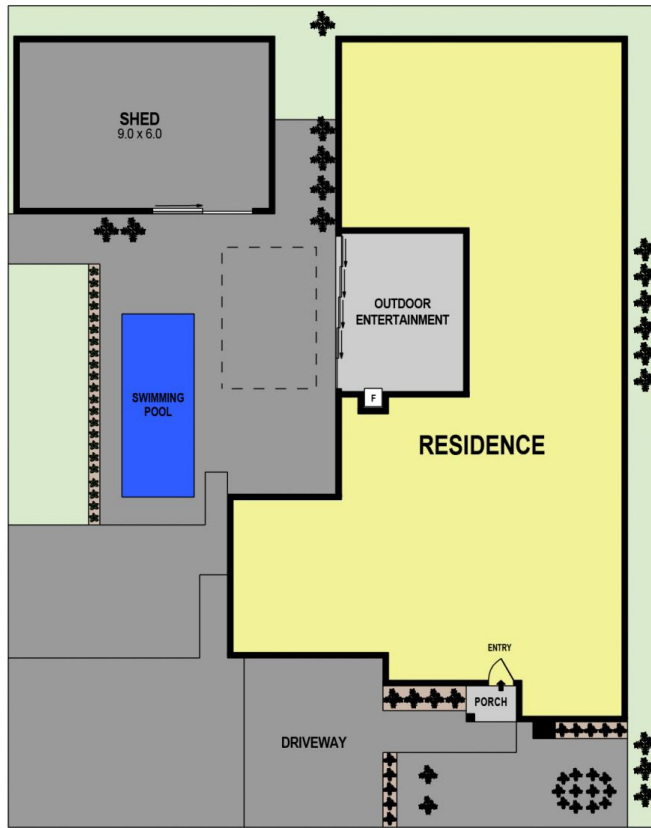
**Type** : House  
**Price** : \$850,000 - \$895,000  
**Land Size** : 725 sqm  
**View** : <https://www.bendigorealestate.com.au/sale/vic/greater-bendigo-region/strathfieldsaye/residential/house/8179299>



**Neki Tzouroutis**  
03 5441 4555



**Matt Gretgrix**  
03 5441 4555

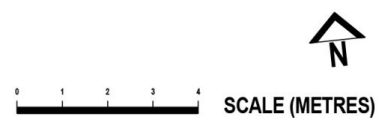


**SITE PLAN**  
(NOT TO SCALE)



**GROUND FLOOR**

INT	:	216m <sup>2</sup>
SHED	:	54m <sup>2</sup>
PORCH	:	2m <sup>2</sup>
GARAGE	:	30m <sup>2</sup>
OUTDOOR ENTERTAINMENT	:	27m <sup>2</sup>
TOTAL APPROX	:	329m <sup>2</sup>



THE ABOVE PLAN IS AN ARTIST'S IMPRESSION ONLY, IT INCLUDES ELEMENTS THAT ARE FOR DISPLAY PURPOSES ONLY AND MAY NOT BE TO SCALE.  
LANDSCAPING SHOWN IS INDICATIVE ONLY. DIMENSIONS ARE APPROXIMATE.  
Ref. No: 241104